



# STANISLAUS AND TUOLUMNE RIVERS GROUNDWATER BASIN ASSOCIATION GROUNDWATER SUSTAINABILITY AGENCY

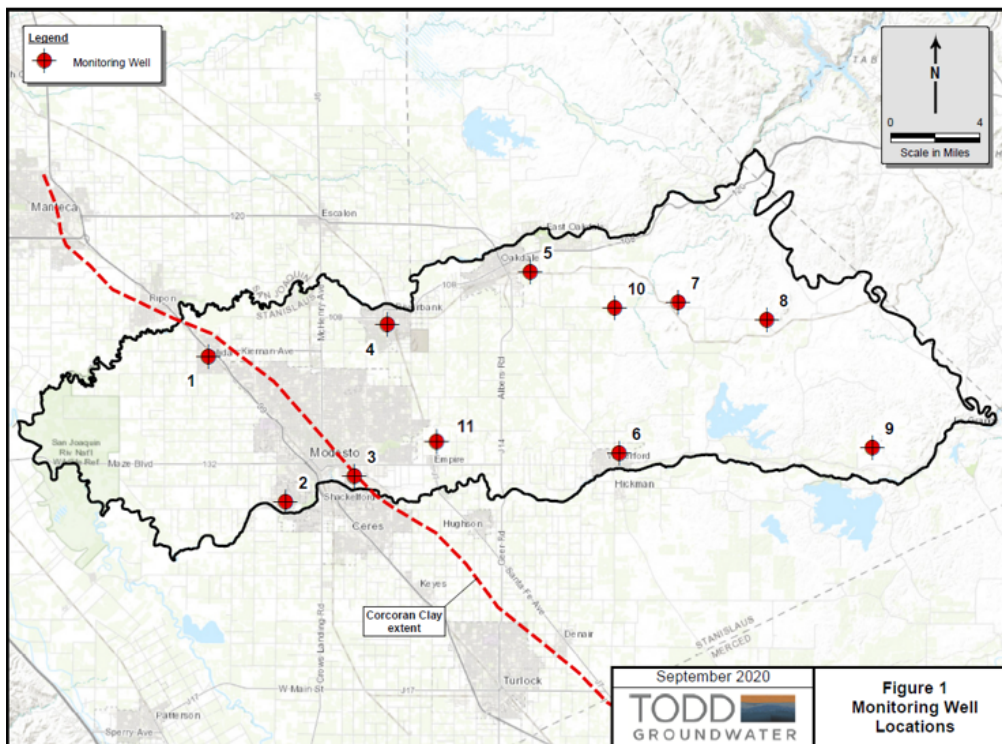
## MONITORING WELLS CONSTRUCTION UPDATE

Last year, STRGBA GSA received a \$1 million grant through the Department of Water Resources (DWR) for the installation of monitoring wells within the Modesto Subbasin. We have officially completed the installation of the planned 16 monitoring wells at 10 different locations in the Subbasin. One additional monitoring well (location 11) may be constructed at a later date.

In an effort to maintain sustainable groundwater levels and high quality groundwater for future generations, these monitoring wells were installed to monitor water levels and quality throughout the Modesto Subbasin.

Monitoring wells were installed above and below the Cocoran Clay in the western area of the Subbasin, within the urban areas, along the river boundaries and in the eastern Subbasin where there are data gaps. The majority of the monitoring wells were installed within or adjacent to disadvantaged communities and severely disadvantaged communities within the City of Modesto, City of Oakdale, City of Riverbank, City of Waterford, Salida and Empire.

Construction of these monitoring wells is a huge achievement for STRGBA GSA. The monitoring well network will be critical to evaluating compliance with sustainable management criteria.



## COMMONLY USED TERMS

**GSA** - Groundwater Sustainability Agency







**GSP** - Groundwater Sustainability Plan

**SGMA** - Sustainable Groundwater Management Act

**STRGBA** - Stanislaus and Tuolumne Rivers Groundwater Basin Association

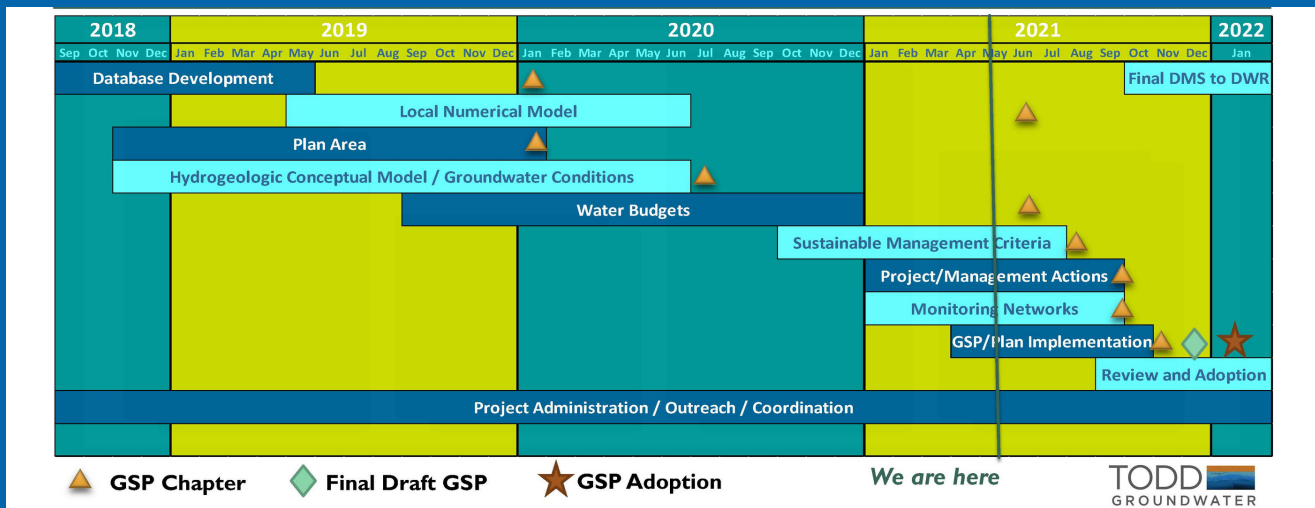
# SUSTAINABLE MANAGEMENT CRITERIA

Sustainable groundwater management is defined as "the management and use of groundwater that can be maintained over the next 20 years without causing undesirable results." SGMA identified six sustainability indicators, which describe potential adverse groundwater conditions. Undesirable results occur if conditions associated with any of the indicators are determined to be significant and unreasonable. Sustainability indicators include:

					
Chronic Lowering of Water Levels	Reduction of Groundwater in Storage	Degraded Water Quality	Seawater Intrusion	Inelastic Land Subsidence	Depletion of Inter-connected Surface Water

To manage groundwater in the Modesto Subbasin, the STRGBA GSA will develop Sustainable Management Criteria as part of the GSP. During the next few months, we will be identifying which sustainability indicators apply to the Modesto Subbasin and then develop a metric, or a "minimum threshold," for determining when undesirable results have occurred. We will also select "measurable objectives," or operational target metrics, to avoid hitting a minimum threshold for each sustainability indicator.

# MODESTO SUBBASIN GSP SCHEDULE



Over the last 18 months, STRGBA GSA has collected reams and reams of data, analyzed the data thoroughly, and is marching towards the submission of the Modesto Subbasin GSP in January 2022. Armed with the knowledge and understanding of where we are today, we are now shifting gears towards the future - what we must do to maintain sustainability where we have it and manage more sustainability where we need it.

**If you are interested in being involved in the GSP process for the Modesto Subbasin, STRGBA GSA meets the second Wednesday of the month at 1:30 p.m.**



## WELL CONSTRUCTION DATA REQUEST

As part of STRGBA GSA's ongoing effort to better understand and characterize the Modesto Subbasin, we are looking for private well owners to volunteer additional well construction data. We welcome data from all areas of the Subbasin - east, west and everything in between. Specific details such as borehole logs with soil strata and well screen depths will be very useful for us to create a sustainable plan for all groundwater users.

**If you are interested in providing well construction data or water level data, please contact us at [strgba@mid.org](mailto:strgba@mid.org).**



### JOIN US ON ZOOM FOR VIRTUAL **GROUNDWATER OFFICE HOURS**

**FRIDAY, MAY 28 | 12 P.M. - 1 P.M.**

You're invited to learn more about what's happening in the Modesto Subbasin and to discuss how Sustainable Management Criteria will be developed in the GSP process.

**STRGBA GSA Groundwater Office Hours meeting information is available at [www.strgba.org/home/activities](http://www.strgba.org/home/activities).**



**Stanislaus and Tuolumne Rivers Groundwater Basin Association  
Groundwater Sustainability Agency | [strgba@mid.org](mailto:strgba@mid.org)**



**[strgba.org](http://strgba.org)**



**@STRGBA\_GSA**



**@strgba.gsa**



**STRGBA GSA**